

STUDENT NAME

FORM TUTOR NAME

FORM GROUP

**BARLBY  
HIGH  
SCHOOL**



Barlby High School  
York Road, Barlby  
Selby, N Yorks  
YO8 5JP

Telephone: 01757 706161  
Email: [hello@bhs.hlt.academy](mailto:hello@bhs.hlt.academy)  
Website: [www.barlbyhighschool.org](http://www.barlbyhighschool.org)  
Twitter: @Barlby\_High

**Hope** Learning  
Trust, York

Principal: Miss Julie Caddell

## **Y6 TRANSITION GUIDE 2021-2022**

Everything you need to know about starting  
at Barlby High School in September 2021





# A warm welcome

I am delighted to welcome you to Barlby High School and to introduce you to our school.

We are a friendly, warm and caring community school; as a relatively small school of 560 students, every child is personally known and cared for. As part of Hope Learning Trust, we enjoy the benefits of belonging to a much larger organisation which enables us to develop staff and share resources. Hope is a growing, successful multi-academy trust and we benefit from collaborating with schools who have a reputation for academic excellence.

We work with the York ISSP partnership, which is an equal partnership of twelve secondary schools – nine state schools and three independent schools. Our students attend master classes with the aim of providing academic challenge through opportunities which schools cannot provide alone.

Our vision is that every child should flourish and develop a real love for learning. We believe that every child is full of potential and has a unique part to play in society. Academic success is important as it is the foundation for the next stage of school life and gives

students the opportunity to choose their future career path. Character development is equally important and my desire is that our students understand their self-worth and are confident, compassionate and kind.

We deliver the Archbishop of York Young Leaders Award and other opportunities such as visits to Taize and working with communities in Malawi and Romania are at the centre of helping our young people to live as part of community, developing others as well as themselves.

Leading this school is a great privilege which brings me much joy. I am fortunate to work with talented and committed colleagues and thoroughly enjoy working with students and the wider community. It really is a team effort and I look forward to working with you in the coming years.

**Julie Caddell**  
Principal



## KEY PEOPLE



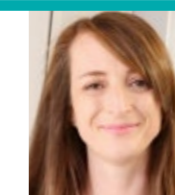
**Julie Caddell**  
Principal



**Fiona Lee**  
Vice Principal:  
Staffing,  
Teaching and  
Learning



**Carly Wallace**  
Vice Principal:  
Curriculum and  
Achievement



**Zoe Hughes**  
Assistant  
Principal:  
Student  
Welfare



**Richard Anderson**  
Assistant  
Principal:  
Special  
Educational  
Needs  
Co-Ordinator



**Simon Rinaldi**  
Transition  
Leader and  
Head of Year 7



## OUR VALUES

As a school, we believe that character development is paramount, and our aim is that Barlby High students understand their own self-worth and are confident, compassionate and kind.

The Archbishop of York Young Leaders Award and other opportunities such as visits to Taize and working with communities in Malawi and Romania are at the centre of helping our young people to live as part of community, developing others as well as themselves.

Academic success is important as it is the foundation for the next stage of school life and gives students the opportunity to choose their future career path.

Our school values are kindness, loyalty, patience, justice, grace, forgiveness and compassion and we aim to look for ways to put these into action in all school activity.

## CONTENTS

2	Contents + Key dates
3	Welcome + Key staff
4	Induction day
5	Your first day at Barlby High
6	The school day
7	Getting to school
8	Catering
9	ParentPay
10	School uniform
12	Communicating key information
13	Y7 curriculum + extra-curricular activities
14	Sport at Barlby High
16	Helping your child
18	Behaviour + Homework
19	Mobile phones
20	Our vision and expectations
22	Friends of Barlby High School

## KEY DATES

### 2021

Teacher training day	Monday 6 September
First day of term	Tuesday 7 September
Half term	25 – 29 October
Teacher training day	Friday 26 November
Last day of term	Friday 17 December

### 2022

Teacher training day	Tuesday 4 January
First day of term	Wednesday 5 January
Half term	22 – 26 February
Last day of term	Friday 8 April
Easter break	11-22 April
May Day Bank Holiday	Monday 2 May
Half term	30 May – 3 June
Last day of term	Friday 22 July





The induction day at Barlby High School is a great way to get a feel for school life

# Induction day

**WE HOPE TO BE ABLE TO FACILITATE AN INDUCTION DAY THIS YEAR BUT IT WILL DEPEND ON COVID GUIDELINES.**

Induction Day is a very exciting time for the vast majority of young people, but some of you may feel a little nervous about the move to High School. We hope this information will help to settle your nerves and help you to realise there is nothing to fear.

On Induction Day, please come in your current primary school uniform. It's always good to see the different coloured uniforms and helps our staff to recognise which primary school you're from. A pencil case with pens and pencils will also be required as we will be doing various subjects in periods 2, 3, 4 and 5.

If you intend to get a school bus to school, don't worry about your pass, the bus company are aware and have been given details of how many children to expect from each primary

school. Just get on at the bus stop you would normally use.

Please be at school as close to 8.40am as you can. Mr Rinaldi will be at the front entrance to meet you and take you into the hall for a very brief assembly. Please try to sit in your form group as it makes registration much easier.

### THE SCHOOL DAY

The day will be a little different to a normal school day. Your tutor will give you a tour of the school to help you find your bearings. You

During induction day, your tutor will give you a tour of the school to help you find your bearings.

will then have 4 sessions with Barlby staff, to give you a flavour of school lessons. Try to think of some interesting questions to ask them as I'm sure other students may find the answers helpful too!

If you wish to bring some food in for a snack at break time or lunchtime, that is fine. We are a cashless school and all transactions are done biometrically using your thumbprint – if this is already set up you can start to use it straight away.

Mr Rinaldi and members of the team will be available all day so if you need to ask anything there will always be someone to help.

The final session will finish at 2.50pm where you will be escorted back to the bus or you can walk home if you live locally – we're sure you'll have a fantastic day!



The first day at secondary school is an exciting day for the whole family

# Your first day at Barlby High

The first day at secondary school is an exciting day for the whole family, but after such a long summer holiday sometimes it is hard getting back into the routine of school. This information will explain what to expect and what you need to know to help you settle in.

During the summer holidays try to have a practice run of the journey to school as this will help you work out exactly what time you need to set off. Walk to the bus stop if you catch the school bus and set off in good time.

It will be the first time you have worn your new school uniform so be prepared for lots of photographs from parents and grandparents – you have been warned! Check your pencil case has all the equipment you will need for your lessons. This is such a great way to make a good impression on your teachers.

### ARRIVING AT SCHOOL

When you arrive at school Mr Rinaldi will be waiting for you at the front door. We will go into the hall for an assembly with the Principal and other important staff you will need to meet.

After assembly, you will be

**IT WILL BE THE FIRST OUTING FOR YOUR NEW SCHOOL UNIFORM SO WATCH OUT FOR LOTS OF PHOTOS!**



taken to your form room with your form tutor where you will meet your form again. You will spend the first period going through your timetable and getting acquainted with your planner. Form tutors will be massively important to you during your time at secondary school. They will get to know you really well, try to get to know them as well.

After lesson one, your normal school day will begin. Follow your timetable to see where you are going. Don't worry about getting lost, there will be people around to help.

Under normal circumstances, all students meet in the hall or the MFL Pod for break. You will be able to buy food and refreshments but also meet up with people here. Have a wander around and meet some of the older students, they will make you feel welcome.

### STRUCTURE

The structure for the day is easy to remember:

8.50-9.15am	Registration and Tutor period activities i.e. assembly, reading time, quiz etc
9.15-10.15am	Period 1
10.15-11.15am	Period 2
11.15-11.30am	Breaktime
11.30am-12.30pm	Period 3
12.30-1.00pm	Lunchtime
1.00-2.00pm	Period 4
2.00-3.00pm	Period 5

Try to make a good impression with your teachers and classmates by answering plenty of questions and using your manners maturely. First impressions really count! Be yourself and you'll have many friends by the end of the day.

Try to make a good impression with your teachers and classmates by answering plenty of questions and using your manners maturely.





A few important things to remember which may be different from your previous school

# The school day

### ATTENDANCE

Students must attend regularly and punctually. If a child is absent owing to illness, medical appointment or family circumstances, a telephone call on the day of absence is required by the start of school at 8.50am, followed by a note sent with the child when they return to school. It is the parent's

responsibility to inform the school on the first day of absence. If a note is not provided this absence may be recorded as an unauthorised absence.

### MEDICAL

If your child is ill, please do not send them to school. If your child is taken ill during the day they should report to their subject

teacher or Year Leader. Some children require medicines to be given during the day. If possible, please give your child the medicine before school, after school and at bedtime. Students must not carry pills or tablets around school. If necessary, they should be handed in at main reception and an appropriate form completed by the parent.

However you get to school, there are a few handy hints to help keep you safe

# Getting to school

Students travel to school through a variety of transport methods. Students walk and cycle to school from Barlby and other neighbouring villages. Students who cycle from Riccall use the cycle track which is a safe means of travel avoiding the need to use main roads.

We ask that students ensure their bicycle is fit for purpose and that they bring a lock to secure their cycle to the cycle stands provided on site. We also encourage students to use a cycle helmet and high visibility clothing to improve safety.

### TRAVELLING BY BUS

A number of our students use the public bus services provided by Arriva. We have good communication links with the bus company who try to ensure we are aware of any impact to routes that may affect students arriving/leaving school. For further information on bus timetables please look on the Arriva website [www.arrivabus.co.uk/yorkshire/journey-planner](http://www.arrivabus.co.uk/yorkshire/journey-planner)

More than 60% of our students are transported via school bus which is provision put in place by North

Yorkshire County Council (NYCC). They are responsible for allocating bus passes and advising which bus your child has been allocated to.

You should receive information directly from NYCC, however, should you have any specific concerns or questions please contact NYCC in the first instance via their website [www.northyorks.gov.uk/school-and-college-transport](http://www.northyorks.gov.uk/school-and-college-transport)

Once your child arrives at Barlby High, if you have any concerns about the buses please contact school reception and we will try to support/resolve any difficulties you or your child are experiencing.

Students will be allocated a time to arrive at the bus stop and they need to ensure they are at the stop five minutes before their collection time. Buses will wait until the allocated time but are responsible for getting all students to school on time.

Bus passes are a key piece of equipment that your child will need to keep with them. Please provide them with a purse or wallet that the bus pass fits neatly into to avoid it getting lost or damaged in transit.

**BUS PASSES ARE A KEY PIECE OF EQUIPMENT THAT YOUR CHILD WILL NEED TO KEEP WITH THEM. PLEASE PROVIDE THEM WITH A PURSE OR WALLET THAT THE BUS PASS FITS NEATLY INTO TO AVOID IT GETTING LOST OR DAMAGED IN TRANSIT.**

### STAYING SAFE

Staff are on duty at the start and end of the school day to ensure that students arrive and leave school in a safe, sensible manner. We appreciate new students may be anxious about travelling to school particularly if this is via a different method to how they travelled to primary school.

If your child has specific concerns please let us know and we can ensure they are buddied up or are supported by a member of staff whilst they familiarise with the change.

Year 7 students are often incredibly resilient and soon embrace the new changes and find someone to 'sit on the bus with' or walk or cycle home with.





# The school menu

Hutchison's Catering provide nutritional food that is well-balanced, varied and well received by students. Hutchison's seek feedback from students as to what they like, what they would like adding to the menu and then modify their menus in response to the student voice. Locally sourced produce, from a variety of suppliers is also used to ensure quality.

We ensure value for money by keeping costs to a minimum, freshly preparing a variety of dishes including hot meals, pasta dishes, sandwiches, salads, wraps and desserts. Drinks are available including bottled water, milk, juices and hot chocolate amongst others. Free water supplies are also available around school for students to fill up their own water bottles.

Menus are on a three-week cycle, offer a wide variety of choice – you can see a sample menu below. Students can dine together in the dining hall and there are other breakout areas where students can sit with friends.

Students very quickly get used to the dining arrangements and past Year 7 feedback has been very positive – they love the flexible dining arrangements and the choice of freshly prepared food available. The catering team are always available to support students.

Any students with allergies or specific dietary requirements can be catered for. Parents are encouraged to share this information with us as soon as possible so that we can ensure students are able to dine with their peers.

### SUBJECT TO COVID GUIDANCE, FOOD IS SERVED TWICE DURING THE DAY:

**Breakfast Club:** before school students can purchase a variety of items such as cereals, porridge, fruit, toast and bagels.

**Lunchtime:** freshly prepared hot meals, Pasta King, baguettes, paninis, desserts and fruit are among the items available for purchase.

Students are split into year groups for lunch so that queues are more manageable.

They can spend their break or lunch enjoying clubs, sporting activities or spending time with friends.

Menus are shared in advance both in school and online so parents and students can plan ahead if they wish.



MONDAY	TUESDAY	WEDNESDAY	THURSDAY	FRIDAY
<b>Main meal</b>	<b>Main meal</b>	<b>Main meal</b>	<b>Main meal</b>	<b>Main meal</b>
Katsu Chicken Curry	Minced beef and onion pie	Pork or chicken sausages	Sweet & Sour chicken	Fish finger sandwich with skinny fries
<b>Vegetarian</b>	<b>Vegetarian</b>	<b>Vegetarian</b>	<b>Vegetarian</b>	<b>Vegetarian</b>
Creamy Cauliflower Cheese Bake	Tomato & basil pasta bake	Tex-Mex vegetable chilli	Pesto & mozzarella flatbread	Vegan sausage roll with skinny fries
<b>Side dishes</b>	<b>Side dishes</b>	<b>Side dishes</b>	<b>Side dishes</b>	<b>Side dishes</b>
Steamed rice, peas & sweetcorn	Herby diced potatoes, carrots & spring cabbage	Mashed potatoes, broccoli & mixed veg	Steamed rice and sweetcorn	Skinny fries & garden peas
Herby diced potatoes & broccoli florets	Garlic bread & seasonal salad	Wholegrain rice, Nachos & Salsa		or baked beans
<b>Light lunch</b>	<b>Light lunch</b>	<b>Light lunch</b>	<b>Light lunch</b>	<b>Light lunch</b>
Crispy Chicken Fillet in a Brioche roll	Nachos, guacamole, cheese & sour cream	Roast cavery baguette	Asian-spice curry pot	Chicken Gyros, mint yoghurt & flatbread
<b>Dessert</b>	<b>Dessert</b>	<b>Dessert</b>	<b>Dessert</b>	<b>Dessert</b>
Traybakes, cookies, home-made muffins or fresh fruit	Traybakes, cookies, home-made muffins or fresh fruit	Traybakes, cookies, home-made muffins or fresh fruit	Traybakes, cookies, home-made muffins or fresh fruit	Traybakes, cookies, home-made muffins or fresh fruit

Barlby High School is a cashless school and uses a high-tech payment system

# Paying for things at school

### PARENTPAY

We have embraced ParentPay, a secure online cashless system, at Barlby High School so students shouldn't be required to bring cash to school at all. This decision was made a number of years ago to avoid students losing money between home and school. Students who are in receipt of free school meals are not identified as the government funding is paid directly in to their ParentPay account. There is also an option for parents/carers to top up their child's account should they choose to.



All students start with a maximum daily spend of £5 and this covers Breakfast Club and lunch. However, there is flexibility for parents to reduce this as they see fit. This enables students to improve their independence, learn to spend wisely and not spend their money all in one go. It also allows parents/carers to remain in control and not allow their child to overspend on food.

### SETTING UP YOUR ACCOUNT

In order to get your child set up on the ParentPay system, a consent form needs to be signed by a parent/carer and a biometric imprint taken of the student's thumbs. This is usually done at the Year 6 visit/parent evening in advance of September to ensure a smooth start on commencing school (subject to signed consent).

If parents/carers don't wish to give consent to the biometric data collection, students can be identified with their surname. This is not a 'finger print' so there is no risk of identity concerns due to parents/carers agreeing to the biometric imprint.

### PAYING FOR OTHER THINGS

In addition to using the cashless system for food provision, we also use the ParentPay system for donations when we run charity events in school.

In the past these have included Red Nose Day, wrist bands for various charities and poppies for Remembrance Day which again

avoids the need for students to bring cash in to school.

We also ask parents to use ParentPay to pay for many other items, including:

- Educational visits both in the UK and overseas
- Rewards trips
- Year 11 leavers' hoodies
- Revision guides

Most primary schools operate cashless systems through ParentPay and accounts can be linked. Parents/carers will be issued with a login to our system and they can then transfer any remaining credit on to their child's new account. They can also link with any other ParentPay accounts they may have for other siblings at Barlby High or still at primary school.

This system works effectively in the school, but if you have any difficulties please let us know.

ParentPay is accessible through the school website [www.barlbyhighschool.org](http://www.barlbyhighschool.org) or you can log in directly at [www.parentpay.com](http://www.parentpay.com)





Make a great impression with your new Barlby High School uniform

# A uniform to unite us all...

## EXPECTATIONS

All students in Years 7 to 11 are required to wear school uniform. A high standard of personal appearance is expected of all students and anyone arriving at school in non-uniform clothing can expect to be sanctioned unless an explanatory note is received and accepted. We hold a stock of spare uniform which is used when students are not wearing correct uniform or shoes. It is important that the standard of uniform reflects a sense of belonging and pride in the school and presents our students in the best possible light to visitors and the wider community.

## COLD WEATHER

In cold weather students can wear a white T-shirt under their shirt but this must not be seen above the shirt and tie. In adverse weather conditions wellingtons or sturdy footwear can be worn for the journey to school but students must change into school shoes on arrival.

## OUTER CLOTHING

Dark coloured jackets or coats may be worn outside when needed. Denim coats/jackets, hoodies and tops with logos are not acceptable for school and should not be worn. Hats and scarves should be removed when inside school buildings. We recommend that all clothing and equipment should be clearly labelled with the student's name.

Uniform must adhere to the uniform requirements above and on the following pages.

## PURCHASING YOUR UNIFORM

Navy and grey trousers are available at a variety of supermarkets and high street shops from as little as £4 a pair. School uniform for Barlby High School is available from: **Classroom Clothing, 22 Finkle Street, Selby Tel: 01757 700577**

## OUR SCHOOL UNIFORM – ESSENTIAL INFORMATION

- If a student wears training shoes or other footwear due to a foot or ankle injury, then a medical note will be required to confirm the need of such footwear and he/she may have to remain in school during breaks to prevent making the injury worse.

- Students are not permitted to wear noticeable make-up.
- Jewellery is not permitted, with the exception of one pair of plain ear studs, a plain watch and one charity band. No other piercings are permitted. Earrings must be removed during PE/sports. Any student with an additional piercing will be asked to remove the piercing and it will be confiscated as per the school rules.
- Essential valuables, such as money and keys, should never be left unattended.
- No extreme hairstyles are permitted and hair should be only one natural colour. If there is any doubt, parents should contact their child's Year Leader prior to re-styling.
- No nail polish, false nails, shellac or acrylic nails.

### PE KIT (boys and girls)

- **Polo shirt** with Barlby High School logo.
- **Shorts** to match polo shirt (can be purchased from Classroom Clothing, in Selby).
- **Socks** (only navy permitted).
- **Trainers.**
- **Hoodie\*** (optional) With Barlby High School logo, for use outdoors.
- **Track pants or leggings\*** (optional) must be navy and without branding or fashion labels.
- **Base layers\*** (optional) must be plain navy.
- **Gum shields** are highly recommended for all students for certain sporting activities such as rugby, hockey, etc in line with sporting guidelines.

### UNIFORM CHECKLIST

- Hair must be of a natural colour and style – no extreme hairstyles are permitted.
- Make-up, if worn, should not be noticeable.
- Coloured nail polish, acrylic nails, gel nails, and other forms of false nail are not permitted.
- Jewellery is restricted to one pair of stud earrings. No other forms of jewellery are allowed.
- Essential valuables, such as money and keys, should never be left unattended.
- If a student wears trainers or other footwear due to a foot/ankle injury, a medical note will be required.

## YOUR SCHOOL UNIFORM

### GIRLS' SCHOOL UNIFORM

- **Navy blazer** with school logo
- **Navy trousers** Formal, classic smart trousers (not skin tight, not jeans/denim/cargo/chino/leggings)
- **Kilt\*** (optional)
- **School tie**  
KS3 version for Y7/8  
KS4 version for Y9/10/11
- **White shirt (with trousers):** Loose fitting with stiff pointed collar to be worn with tie; shirt must be long enough to be tucked in and wide enough at the neck to fasten the top button.
- **White shirt (with kilt):** An open-necked white blouse can be worn *without* the school tie if wearing the kilt.
- **Slipover** with school logo: KS3/grey KS4/navy.
- **Tights** must be plain and either black or navy.
- **Socks** must be black or navy and are not permitted to be worn over tights. No trainer socks please.
- **Shoes:** Plain black leather (look) flat formal shoes (trainers/canvas/branded are not permitted). Ankle boots may be worn under school trousers.

### BOYS' SCHOOL UNIFORM

- **Navy blazer** with school logo
- **Navy or dark grey trousers** Formal, classic smart trousers (not skin tight, not jeans/denim/cargo/chino/leggings)
- **School tie** either KS3 version or KS4 version depending on form group/age
- **White shirt:** Loose fitting with stiff pointed collar to be worn with tie; shirt must be long enough to be tucked in and wide enough at the neck to fasten the top button.
- **Slipover** with school logo: KS3/grey KS4/navy.
- **Socks** must be plain black or navy. No trainer socks please.
- **Shoes:** Plain black leather (look) flat formal shoes (trainers/canvas/branded are not permitted). Ankle boots may be worn under school trousers.







Ensuring you're up-to-date with the latest developments at school

# Staying in touch

## ELECTRONIC COMMUNICATION

We operate an email only letter service for communication between school and parents/carers. If you are happy for us to communicate with you by email we will also use this system to send alerts and reminders.

Please ensure you provide a current email address when completing our Admissions Pack as we will use this to communicate with you. Please note, it is the parent's/carer's responsibility to ensure we have a valid email address on our system. If you need to update your email address at any point, this can be done by emailing [hello@bhs.hlt.academy](mailto:hello@bhs.hlt.academy) or by contacting the main office.

Copies of all communications sent will appear on the website.

## TEXTING SYSTEM

We operate a texting service for school reminders and emergency communication, for example should we need to send an urgent message to parents in light of school closure due to bad weather.

Please ensure you provide a mobile number when completing our Admissions Pack as we will use the information you provide when sending out texts.

## NEWSLETTERS

Regular newsletters are sent to all parents/carers which provide updates from around the school, celebrate students' achievements and contain dates and information of forthcoming events.

## CLASS CHARTS

We use ClassCharts to log merits, homework and behaviours within school. A parent and a student app (or web version) are available. Login information and codes will be made available to you in September.

## MEETING SLT

We hold regular sessions for parents/carers to meet with the Principal and other members of the Senior Leadership Team (SLT) to discuss any aspect of school life.

## TERM-TIME HOLIDAYS

It is not possible for us to authorise an absence for a term-time holiday other than in very exceptional circumstances. Attendance at school is very important for your child's future as there is a clear link between attendance and achievement. Even a few days absence can impact on a child's progress.

The Principal has a discretionary power to authorise absence in exceptional circumstances and evidence must be provided alongside the request form. Please note this is not an entitlement.

# Moving to secondary school brings exciting changes to what you will study

# An exciting curriculum

Moving to secondary school is an exciting time for most children. They will look forward to the big changes that a secondary school timetable will bring them: variety; learning new things; different subjects; and new teachers, to name a few. Our job is to make that transition to the new and different routines as easy and enjoyable as possible.

The work done in primary schools is both broad and varied. The Key Stage 3 curriculum at Barby is designed to build on that hard work. The curriculum will increase specialised subject knowledge as well as develop thinking and learning skills. There will be time dedicated to new areas within the curriculum allowing students to express themselves more creatively both in individual subjects and across the whole subject range.

In Year 7 all students will follow the same core curriculum including:

- English
- Mathematics
- Science (including Biology, Chemistry and Physics)
- Languages
- Humanities (including Geography, History and RS)
- Art, Technology and ICT
- Performing Arts

## HOW WILL THE WORK BE DIFFERENT?

All children will study all of the National Curriculum subjects. The main differences will be:

### MORE TEACHERS

Your child will have a specialist in each of their subjects meaning they will see lots more staff than at primary school.

### MORE SPECIALIST FACILITIES

Your child will be able to access many more specialist facilities than in most primary schools such as science labs, art rooms, sports facilities and technology rooms and equipment.

## GETTING TO LESSONS AROUND SCHOOL

As the children are being taught by specialist subject staff in specialist facilities, the students will need to move around the site to access them.

## MAXIMISING POTENTIAL

At Barby we aim to challenge all children with regard to their ability and allow them to maximise their potential. To help your child fulfil that potential we ask that you actively encourage them to get involved and take all of the new opportunities they will be given.



## EXTRA-CURRICULAR ACTIVITIES

- Charity Group
- Music Jam
- Forest School/ Eco Group
- Anime
- Choir
- Drama/Musical Theatre Club
- Yu-Gi-Oh and Board Games
- Film Club
- Art Club
- Various sporting clubs throughout the year





We have a wide range of sporting activities on offer at Barlby High School

# A sporting chance for everyone

## GREAT FACILITIES

You are coming to a school with excellent sports facilities! This means we can offer a wide range of activities and lessons are very rarely effected by adverse weather conditions.

We have extensive playing fields, an astro turf, dance studio, gymnasium, sports hall and a weights room.

## A WIDE RANGE OF ACTIVITIES

There are so many sports available and we will try very hard to find a sport for **all** students to be good at. We regularly teach the following sports: athletics, football, badminton, rugby, netball, hockey, gymnastics, fitness, table tennis, orienteering, basketball and trampolining.

We also offer taster courses in the following sports: judo, archery, fencing, triathlon, shooting, pursuit



cycling, volleyball, handball, skiing and snowboarding.

We genuinely want all of you to find a sport to be good at and clubs are open to all students. Please give them a go – you never know who will be the next Olympic champion!

## LEARNING NEW SKILLS

You will be learning skills through many sports at Barlby High. In addition to learning practical skills you will also learn



the theory behind the sports that help to improve performance. Our aim is to develop your knowledge, skills and most importantly a love of sport that means you will continue to participate for the rest of your lives.

## GOING EVEN FURTHER

You could have the chance to play for school teams, some of which have been very successful or even join the Ski Trip and enjoy another fantastic sport in the beautiful mountains of Italy. Some of you might want to be coaches, referees and sports leaders and we will help you work towards these ambitions.



**WE GENUINELY WANT ALL OF YOU TO FIND A SPORT TO BE GOOD AT AND CLUBS ARE OPEN TO ALL STUDENTS. PLEASE GIVE THEM A GO – YOU NEVER KNOW WHO WILL BE THE NEXT OLYMPIC CHAMPION!**





# Helping your child



We asked a group of students across the age and ability range at Barlby, how you as parents/carers can support them to be the best that they can be. This is what they said:

### GETTING ORGANISED

“Give us an area at home where we can work. This might be a study or desk in our bedrooms. Ask us what kind of area we would like; some of us like to be on our own, some of us like to be able to talk through our learning, some of us like background music and some of us like total silence.”

“Sometimes we are not as organised as we should be so keep a pack of materials at home; these should include pens, pencils, rubber, ruler and paper.”

“Keep a dictionary at home for checking spellings and the meaning of words.”

“When we are revising for end of topic assessments and exams we might need revision guides and revision materials eg sticky notes, revision cards and blank paper for mind-maps. There are lots of revision apps available.”

“Help us to get into good habits from Year 7 by looking through our student planners to check that we are using them correctly and keeping to home-learning and

assessment deadlines. Don't nag us to get work done, but give us the freedom to organise our own time first before stepping in.”

### GETTING INVOLVED

“Attend our online Parents/Carers evenings because this is your chance to speak to the teachers about our learning. We feel supported at home and school when you attend parents evenings (even if we sometimes get into trouble because we haven't done our home-learning or worked to our best in lessons). It is an opportunity for us to get praise from you and the teachers as well as support for how we can improve. Don't worry if you don't know things about the subjects we are studying because the teachers are very helpful and will answer any questions you have.”

“Read the teacher and student comments in our books so you know what we are doing well at, what we need to improve on and how we can do this.”

“80% of our time is spent outside of school so we need to learn outside of school too. We could visit places together that are linked to what we are learning about in school. Even going to the shops will help us with our percentages for maths.”

“Take an interest in what we are learning. Ask us what we have learned because by explaining it to you helps us to understand our learning better. This also helps us to ask you if there is anything we don't understand. It is OK to admit to us if you find something difficult because it helps us to understand that we are not going to be perfect at everything, but we can learn together.”

“Watch TV programmes with us that may help us in our learning.”

“Play games with us that may help us in our learning eg Scrabble and computer/internet games.”

### ADDITIONAL HELP

“Help us with our home-learning, but don't do it for us. Ask questions such as ‘what are you going to do next?’ or ‘how does that work?’ By answering these types of questions we will develop our own ideas.”

“Teachers set us home-learning through ‘ClassCharts’ which we really like because we can check our home-learning via an app or the website. Parents/carers can use the app and website so you know exactly what our home-learning is, when it is set and when it is due in.”

**TAKE AN INTEREST IN WHAT WE ARE LEARNING. ASK US WHAT WE HAVE LEARNED BECAUSE BY EXPLAINING IT TO YOU HELPS US TO UNDERSTAND OUR LEARNING BETTER.** Y7 student comment





We have high expectations and reward students for their efforts

# On your best behaviour

## EXPECTED BEHAVIOUR

In order for our school to run smoothly on a day to day basis and to give everyone at Barlby High School the best chance, we have a Behaviour for Learning policy. This sets out the rules to make sure over 600 people can work together happily on a daily basis. We place emphasis on our rewards system and each term awards are issued to students within each year group. These rewards are given to students that have been nominated by staff in school for their outstanding contribution to school life. On a daily basis rewards are issued by staff in school through praise, postcards home, letters and phone calls home. These all contribute to merit totals.

The main aims of our school Behaviour for Learning policy:

- To promote a positive environment in both teaching areas and around the school site where learning can be effective, where both staff and students feel safe and respected.
- To minimise low level disruption so we can maximise the amount of time available for learning.
- To encourage and develop a sense of personal responsibility and accountability by students and emphasise that they make clear choices regarding their behaviour.

- To ensure that students are rewarded for positive contributions that they make.
- To communicate with parents/carers quickly where significant positive and negative intervention has taken place.

## PASTORAL CARE

The school has a warm and caring ethos and students are supported by excellent professional relationships developed between staff and students. Students are supported by their form tutor and their Year Leader who ensure that they quickly settle into school life and any concerns raised are dealt with quickly.

We do not accept any form of bullying and have clear anti-bullying procedures as part of our Behaviour Policy. If you suspect your child is being bullied please inform their Form tutor and Year Leader.

Try and give as much information as possible. Your child can report bullying to any member of staff in school and all students can post information into the school 'Worry Box' which is based in student support.



## HOMEWORK

We use an online tool called 'ClassCharts' to help you keep track of your child's homework. ClassCharts will allow you to see the details of the tasks your child has been set, as well as their submission status and grades. ClassCharts enables you to:

- Log in at any time (24-hour access)
- View the quality and quantity of homework
- See everything via a free app available for smartphones or via a web version

In September, you will be provided with login details to your parent account, which is linked to your child's homework calendar. Computers are available at break and lunchtime for students to access their accounts whilst at school.

If you or your child have any questions about the service, please speak to their form tutor in the first instance.

We expect all students to abide by our mobile phone policy

# Be smart with mobile phones

The following guidance should be read in conjunction with the school's Mobile Phone Policy which is available at [www.barlbyhighschool.org/our-policies](http://www.barlbyhighschool.org/our-policies)

At Barlby High School we want students to be focused on their academic studies and not be distracted by using mobile phones during the time they are in school.

However, we do understand that many students have a mobile phone and for a number of parents/carers this is a safety measure for students on their way to and from school. We strongly recommend that parents do not try to make contact with their son or daughter during the school day. A student who needs to contact parents can do so through student support.

## STAYING IN TOUCH

If any parent needs to get in touch with their son or daughter urgently during the school day they should contact the school office or student support and a message will be passed on. If parents/carers feel it is important that their child has a phone with them, they must support the school by reinforcing

the policy that mobiles are not seen or heard either in the school building or outside during break and lunch breaks. All mobiles should be kept in their bags or even better locked away in their locker.

If a student is caught using a mobile phone or their mobile disrupts a lesson on the first occasion it will be confiscated, given to student support and a code issued. The student will be able to collect the phone at the end of the school day from student support. A letter will be sent to the student's parent/carer so they are aware the phone has been confiscated. We will expect all parents/carers to sign to say they are aware the mobile has been confiscated and any further incident will be treated seriously.

If we have any more incidents with a student's mobile it will again be confiscated. Student support will contact home to arrange a suitable time for the parents to come in and collect the phone. A detention will be given as a sanction.

If there are any further incidents the phone will not be returned until a meeting is arranged with either the Year Leader or member of the Senior Leadership Team and the student. Either the student will agree to hand the phone in to student

support at the start of the day, and then collect it again at the end of the day, or it will be agreed that the phone will be kept at home. The student will also receive a 60-minute detention. As part of the meeting a Behaviour contract will be signed to say that both the student and the parent/carers are aware that any future incidents will be dealt with by a member of the Senior Leadership Team. This member of staff can apply a more serious sanction appropriate for persistently ignoring school rules.







# Sharing our vision and expectations



## EXPECTATIONS FOR LESSONS – WE MUST:

- arrive on time, fully equipped, in correct school uniform, and ready to start the lesson in silence.
- follow instructions the first time they are given.
- concentrate and participate.
- speak and act towards others with both courtesy and respect.
- not distract others – allow teachers to teach and others to learn.
- complete class and homework to the best of our ability and meet all deadlines.
- take pride in our work and keep books, including planners, in good condition.

## EXPECTATIONS AROUND SCHOOL – WE MUST:

- be in morning Registration/ Assembly before 8.50am and in Period 4 by 1.00pm
- wear full and correct school uniform in class and when moving around school (no jewellery, no noticeable make-up and top button fastened).
- avoid confrontation and do as we are told first time, every time.
- move calmly and quietly about the school.
- be polite, use inoffensive language and respect the feelings of others.
- understand that all forms of bullying are unacceptable.
- eat only in designated areas and place litter in the bins provided (no chewing gum).
- stay on the premises at all times.
- treat all property (whoever it belongs to) and the school premises with respect.
- ensure that mobile phones and music players are not seen or heard in the building at all, or outside the building at break, lunchtimes or before or after school.

## A STUDENT CHARTER

All students at Barlby High School have certain basic rights and responsibilities:

- I have the right to learn and the responsibility to behave in a way that allows staff to teach and other students to learn.
- I have the right to be and feel safe and have a responsibility to act in a way that allows other students to be and feel safe.
- I have the right to expect that my property remains safe and have a responsibility to act in a way that allows my property and that of others to remain safe.
- I have the right to be treated fairly and with respect and a responsibility to treat others fairly and with respect.
- I have the right to have my efforts recognised and have a responsibility to recognise the efforts of others.
- I have the right to attend a pleasant school and the responsibility to keep it pleasant.
- I have the right to benefit from the good name of Barlby High School and have a responsibility to dress and behave in a way that builds upon this reputation.

## HOME SCHOOL AGREEMENT

The School expects that you **(as a student)**:

- are punctual and attend regularly.
- take responsibility for your own learning, organisation and behaviour.
- work to the best of your ability, complete your homework on time and meet deadlines.
- participate to the best of your ability in school/form activities.
- follow the school rules and uniform requirements.
- are honest, polite and exhibit good behaviour at all times.
- show respect for others, their possessions and the school environment.
- share any problems with a teacher and parents/carers.

The School expects that you **(as a parent/carer)**:

- support the School's Behaviour Policy.
- ensure regular and punctual attendance by your child, and avoid holidays in term time.
- support your son/daughter in homework and other opportunities for learning.
- have positive and realistic expectations of your child's ability.

- ensure your child comes to school with the appropriate uniform and equipment.
- attend parents' evenings and discussions about your son/ daughter's progress.
- advise the school of problems/ achievements/issues concerning your child.
- reply to school communications and notify the school on first day of absence.
- when contacting the school please be polite and respectful to members of staff.

## HOME SCHOOL AGREEMENT

We **(as a school)** will:

- provide effective teaching.
- provide a happy and caring school environment.
- set appropriate homework for your child.
- effectively monitor your child's progress.
- praise your child for their achievements.
- approach problems in a professional, fair and consistent manner.
- communicate our concerns and problems concerning your child.
- provide a wide range of extra-curricular activities.
- communicate up-to-date and timely information about school events.







# Friends of Barlby High School

The Friends of Barlby High School (FoBHS) is an independent voluntary group, consisting of pupils and parents, supported by teachers and the school. Our purpose is to support the school in their efforts to raise funds so as to improving the current facilities.

This is achieved by working together as parent/carers and staff, further developing our relationship and organising activities and events which support the school.

FoBHS plays an important role within the school and local community with activities centred on several key areas: fundraising, the provision of second-hand school uniform and communication. It is also a forum for parents to raise suggestions and ideas.

## ACTIVITIES

FoBHS have so far been involved in parent/carer evenings and supporting school productions. There is an end of year celebration planned and various activities for the Autumn term. If you are unable to get involved in these activities, you could donate directly to the school. Money raised will be fed back into the school to purchase new resources, such as library books and other learning equipment which will add value to their learning experience.

## GET INVOLVED

As well as organising and running events, FoBHS provides valued support and help at school functions such as providing refreshments for consultation evenings and open days.

If you would like any other information about FoBHS, would like to become a member or have any suggestions or ideas about fund-raising or projects please email Caroline Webster – [c.webster@bhs.hlt.academy](mailto:c.webster@bhs.hlt.academy)